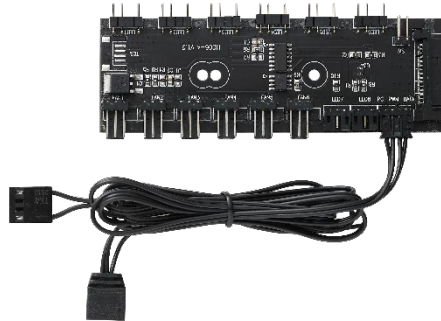
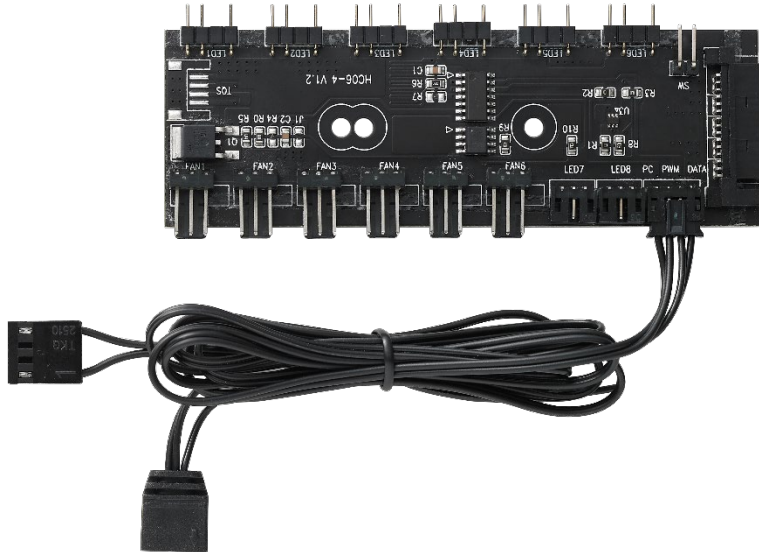
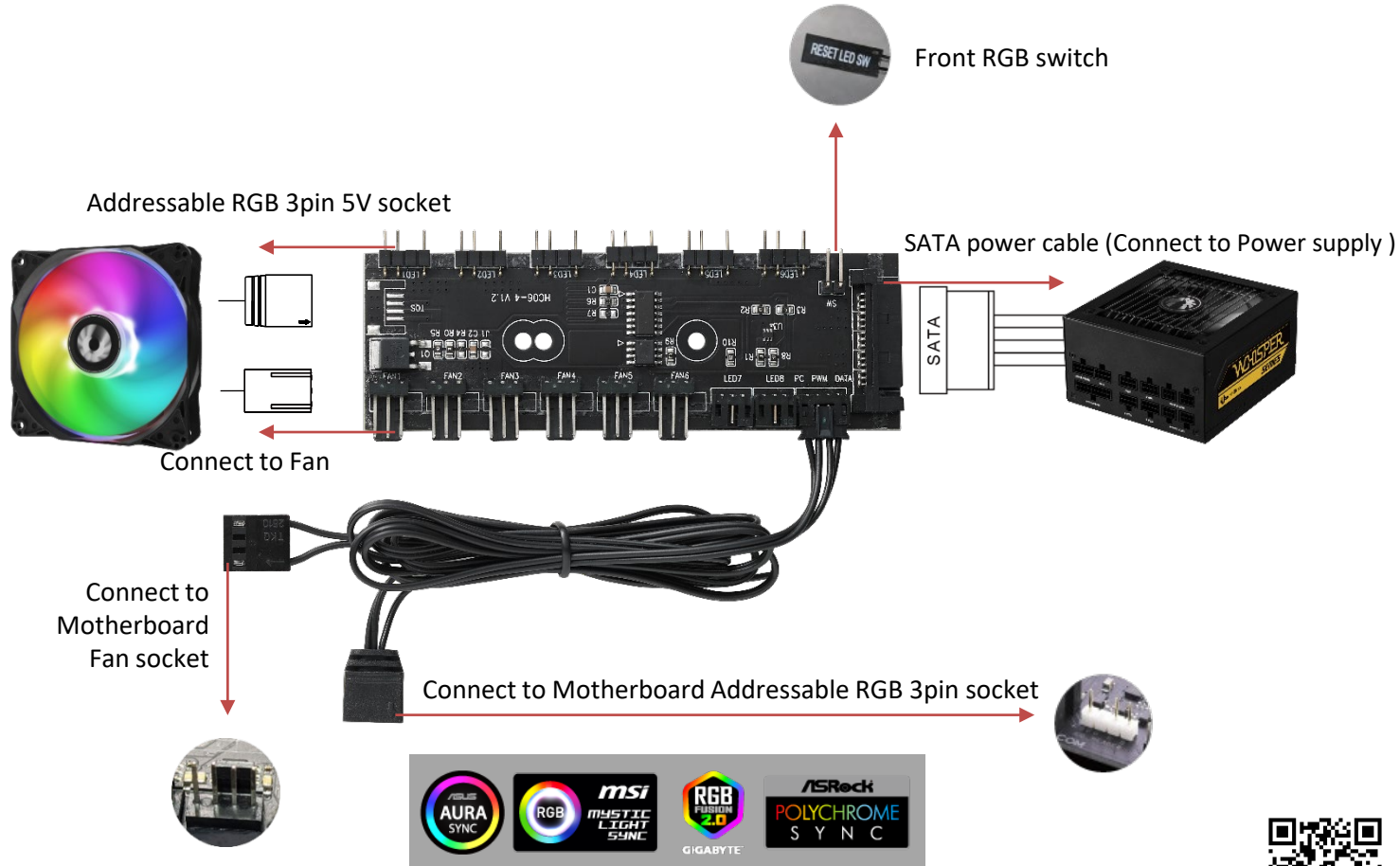


6+6 Controller Introduction





- Rated voltage DC12V/DC5V
- With 6 ARGB 3Pin 5V sockets, 6 12-volt fan sockets and a ARGB header connected to Motherboard
- A single ARGB socket can bear 80 LEDs
- A single fan socket can withstand 6 12-volt fans
- A total of 60 lighting illumination modes
- If you connect the controller to the Motherboard, long press the switch for the first time to enter the Motherboard follow mode and long press the switch again, the fan will flash white light then turn off.
- If you only use the controller, long press the switch and the LED will flash white light then turn off.
- This controller compatible with Asus AURA SYNC, MSI Mystic Light, Gigabyte RGB Fusion 2.0 and Asrock Polychrome SYNC



If your motherboard comes with VDG socket, please go to BitFenix support ticket for assistant.



Spectre ARGB SE Introduction

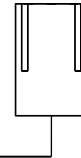




Dimension	120 x 120 x 25mm
Rated voltage	DC 12V
Start Voltage	≤ 6V
Bearing Type	Hydraulic Bearing
Speed	1200 ± 200 RPM
Max Air Flow	33.2 CFM
Noise	24.4 dB-A
Power Consumption	Fan: 2.4W LED: 1.5W
LED	8 PCS

- This fan compatible with Asus AURA SYNC, MSI Mystic Light, Gigabyte RGB Fusion 2.0 and Asrock Polychrome SYNC



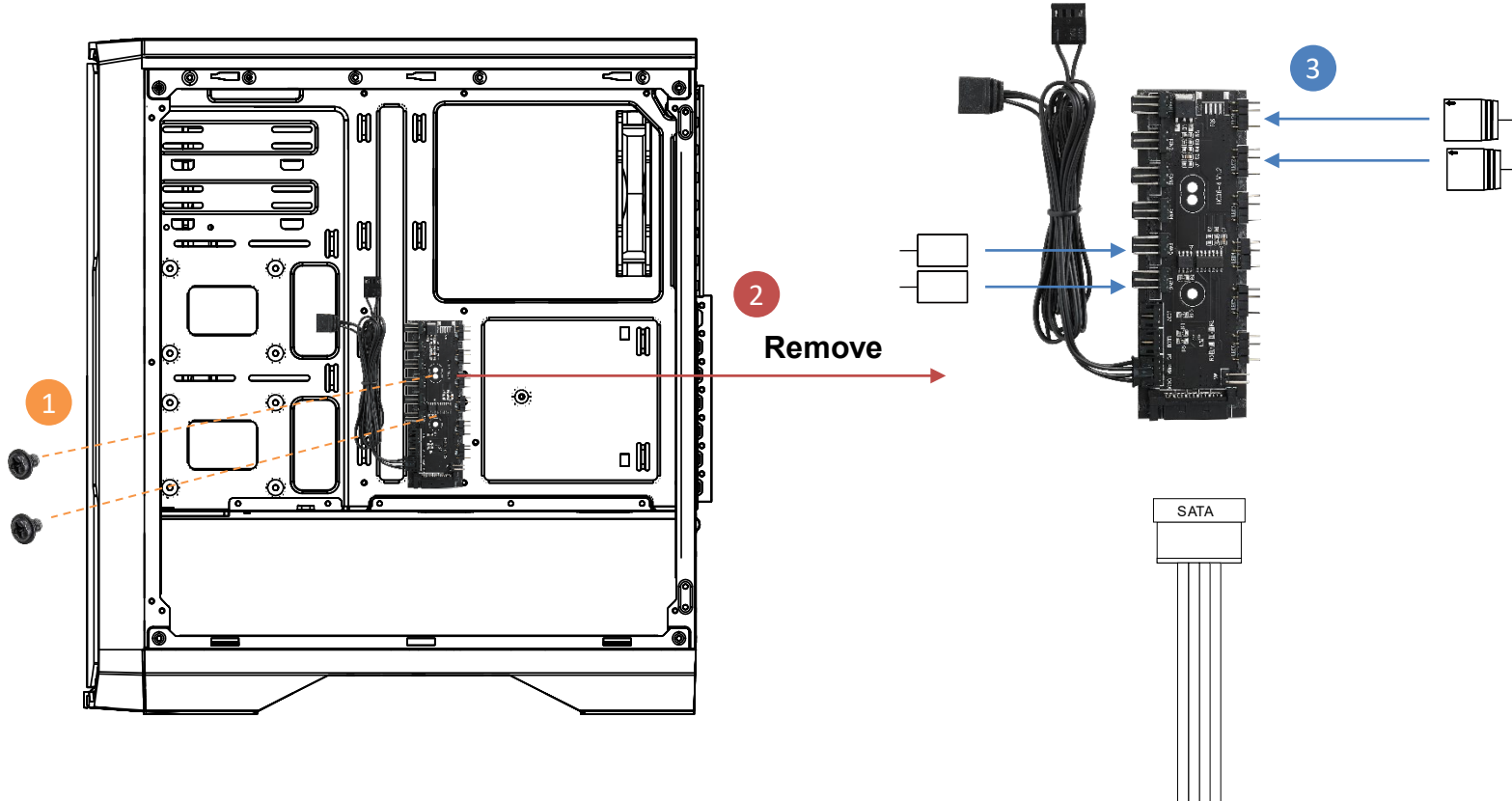


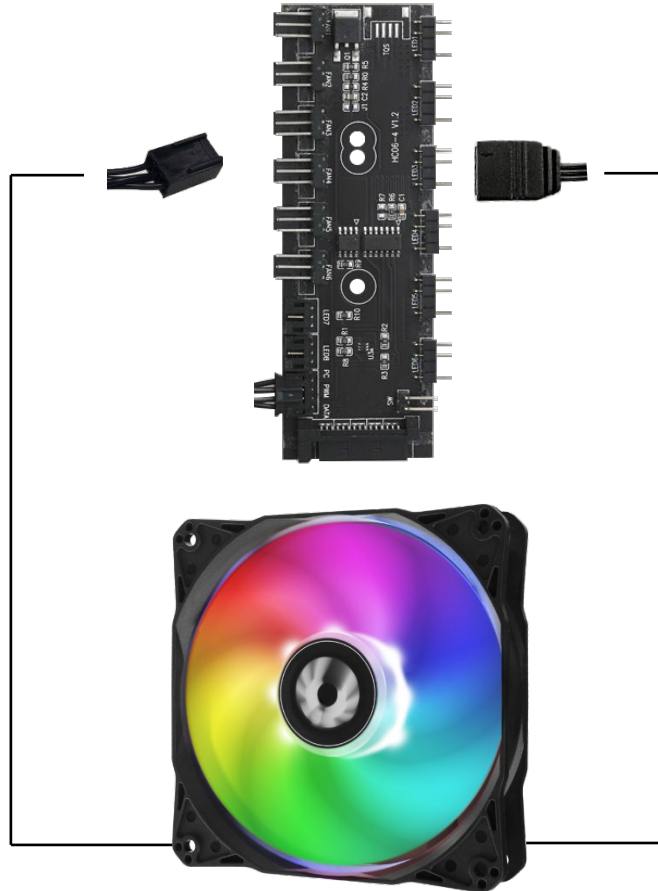
Connect to fan header
on motherboard or
controller for power

Connect to ARGB LED
connector on motherboard
or controller with 3 pin
ARGB LED connector



■ Please remove the 6+6 controller from the case ,
before you connect the ARGB cable or fan.





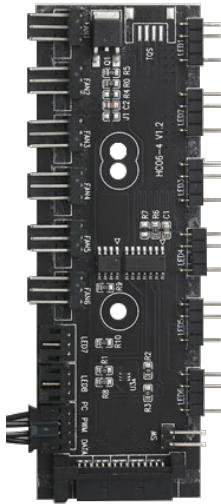
Fan power header

Connect to fan header on motherboard or controller for power.

ARGB LED connector

Connect to ARGB LED connector on motherboard or controller with 3 pin.

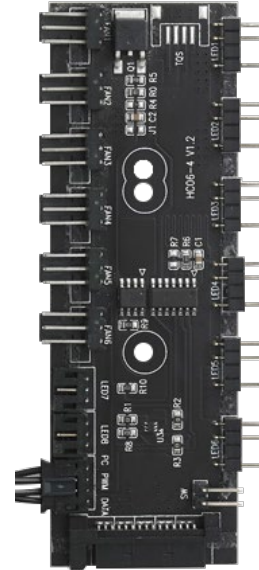
- How to connect ARGB header on 6+6 controller
Each socket support up to 80 LEDs



How to connect fan header on 6+6 controller
Each socket support up to 6 fans

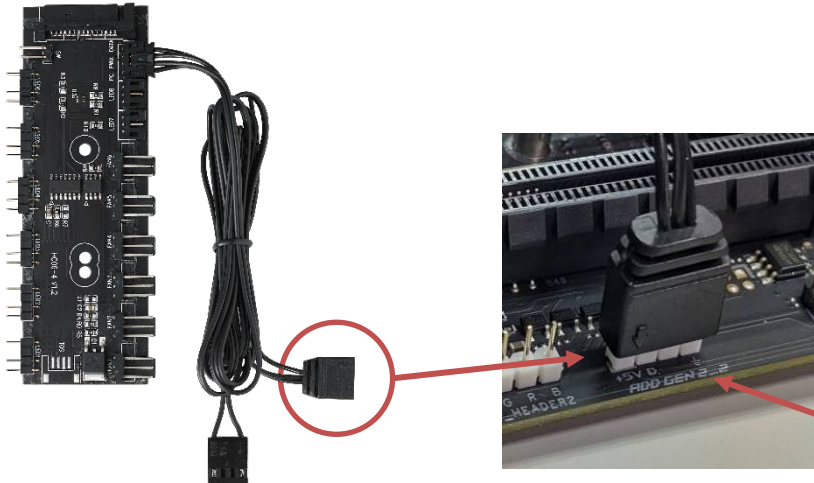


Please turn it over and plug in



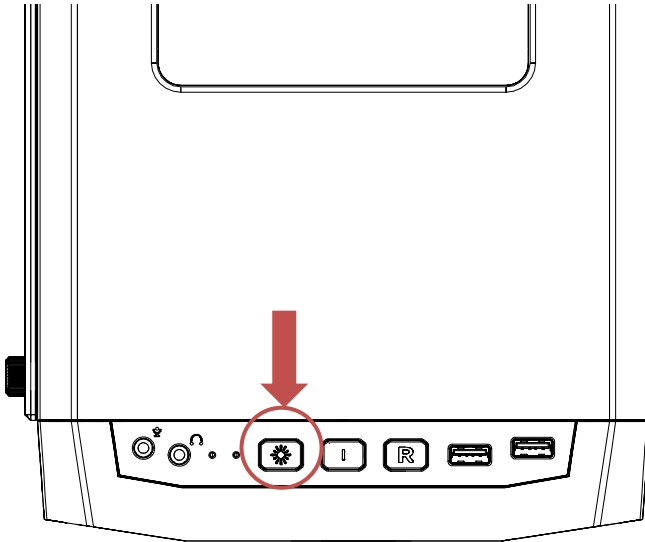
How to connect by Motherboard Addressable RGB 3pin socket

- If you connect the controller to the Motherboard, long press the switch for the first time to enter the Motherboard follow mode and long press the switch again, the fan will flash white light then turn off.
- This controller compatible with Asus AURA SYNC, MSI Mystic Light, Gigabyte RGB Fusion 2.0 and Asrock Polychrome SYNC



6+6 Controller

Please press LED button to switch the light mode



- A total of 60 lighting illumination modes
- If you connect the controller to the Motherboard, long press the switch for the first time to enter the Motherboard follow mode and long press the switch again, the fan will flash white light then turn off.
- If you only use the controller, long press the switch and the LED will flash white light then turn off.
- This controller compatible with Asus AURA SYNC, MSI Mystic Light, Gigabyte RGB Fusion 2.0 and Asrock Polychrome SYNC



How to daisy chain with 6+6 controller and other Bitfenix ARGB accessories

