



PROTON

- Quick Installation Guide
- Guide d'installation rapide
- 安裝指示說明
- 安裝指示说明

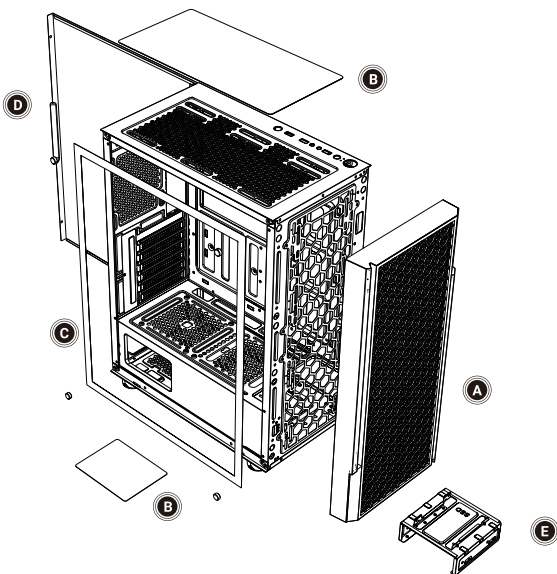
Package Content/Contenu du coffret/產品內容/产品内容

Case	Quick Installation Guide	Accessory Pack
3X Motherboard standoff	8X 3.5" HDD screw	5X PSU screw
19X Motherboard standard screw	4X Cable Tie	

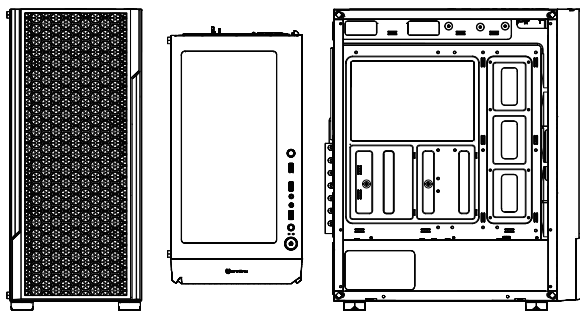
Boîtier	Guide d'installation rapide	Pack d'accessoires
3X entretoise de carte mère	8X vis pour disque dur 3,5"	5X vis de bloc d'alimentation
19X vis de carte mère standard	4X attache de câble	

機殼	安裝指示說明	配件盒
3X 主板腳柱	8X 3.5" 硬碟螺絲	5X 電源螺絲
19X 主板螺絲	4X 束線帶	

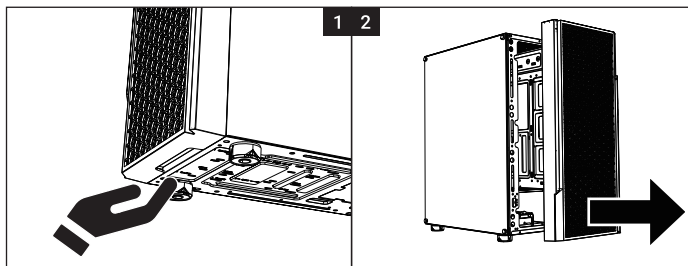
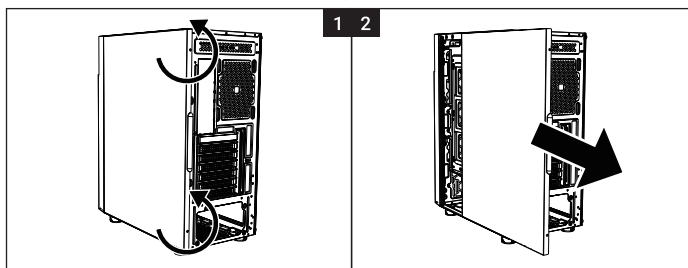
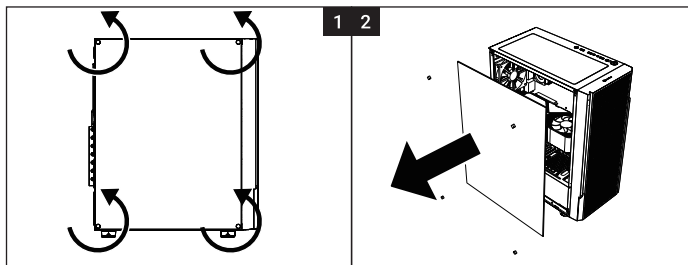
机箱	安裝指示说明	零件盒
3X 主板脚柱	8X 3.5" 硬盘螺丝	5X 电源螺丝
19X 主板螺丝	4X 扎带	



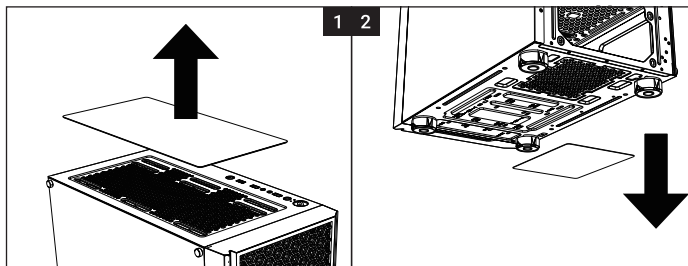
- | | | | |
|-----------------------------------|----------------------|----------|--------|
| A Front Panel | D Side Panel | A 前面板 | D 右側板 |
| B Dust Filter | E Hard Drive Tray | B 濾網 | E 硬碟支架 |
| C Tempered Glass Side Panel | | C 鋼化玻璃側板 | |
| A Panneau avant | D Panneau latéral | A 前面板 | D 右側板 |
| B Filtre anti-poussière | E Rack de disque dur | B 过滤器 | E 硬盘支架 |
| C Panneau lateral en verre trempé | | C 鋼化玻璃面板 | |



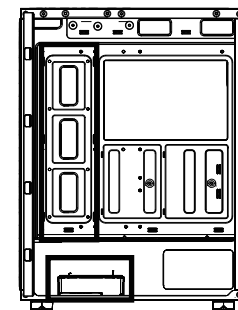
How to remove the Right side panel/Tempered glass side panel/front panel
 Comment retirer le panneau latéral droit / le panneau latéral en verre trempé / le panneau avant
 如何移除右側板 | 鋼化玻璃側板 | 前面板 | 如何移除右面板 | 鋼化玻璃面板 | 前面板



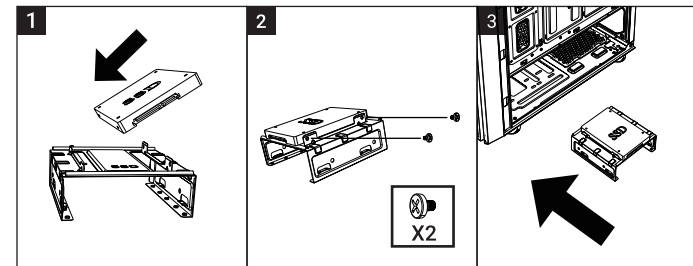
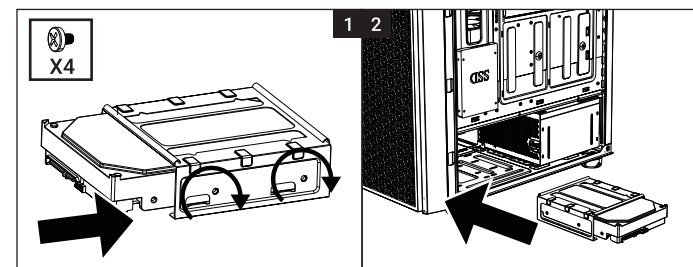
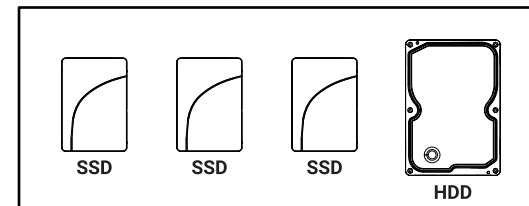
How to remove the dust filters/Comment retirer les filtres anti-poussière
 如何移除濾網 / 如何移除过滤器



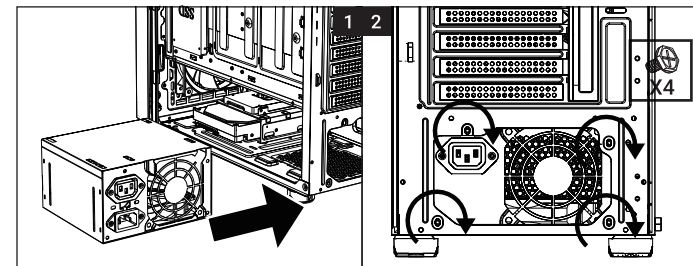
Drive Locations/Emplacements de disques durs/硬碟位置/硬盘位置



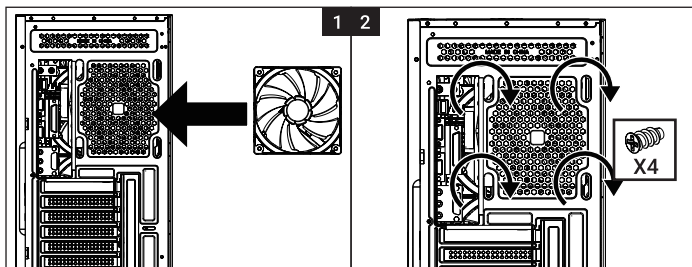
3 x SSD + 1 x HDD



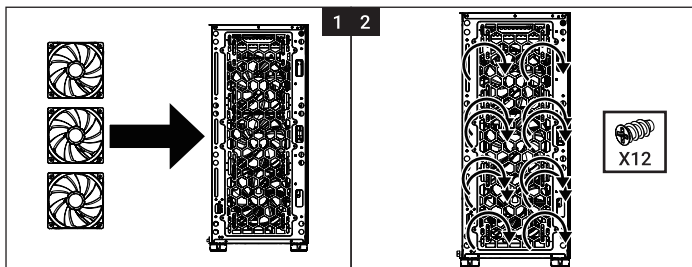
PSU Installation/Installation du bloc d'alimentation/電源安裝/电源安装



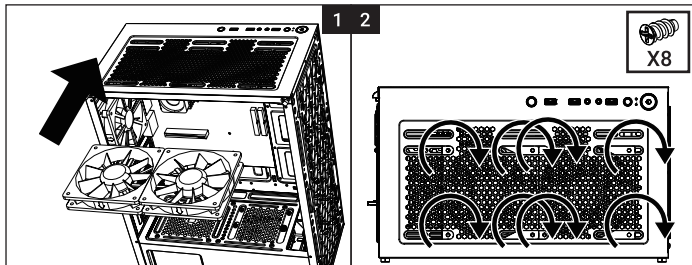
Fan (Back) Installation/Installation du ventilateur arrière
風扇(後方)安裝/風扇(后方)安裝



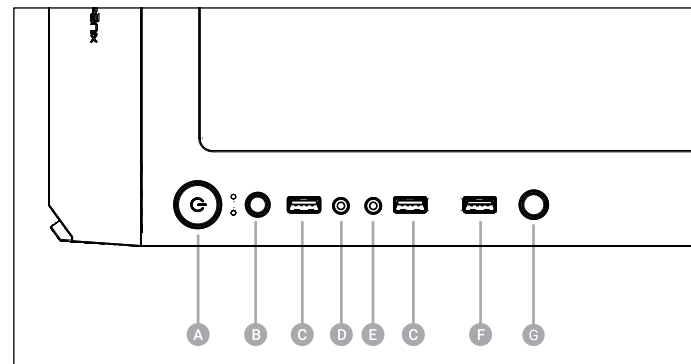
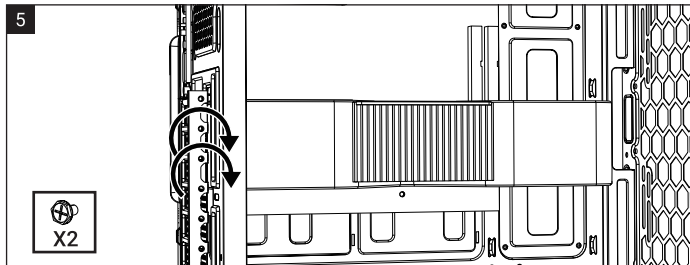
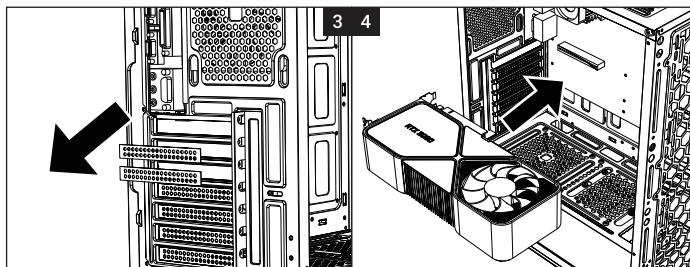
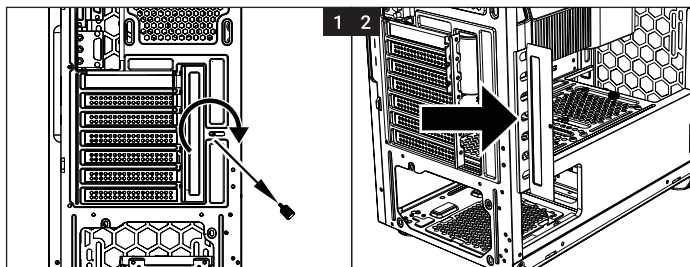
Fan (Front) Installation/Installation du ventilateur avant
風扇(前方)安裝/風扇(前方)安裝



Fan (Top) Installation/Installation du ventilateur supérieur
風扇(上方)安裝/風扇(上方)安裝



VGA Card Installation/Installation de la carte graphique/顯卡安裝/顯卡安裝



- A Power Button
- B Reset Button | LED Button
- C USB Port
- D Headphone Jack
- E Microphone Jack
- F USB 3.0 Port
- G LED Button

- | | | |
|---|----------------------------|--------------|
| A Bouton d'alimentation | D Prise jack de casque | G Bouton DEL |
| B Bouton de réinitialisation bouton DEL | E Prise jack de microphone | |
| C USB Port | F Port USB 3,0 | |
| D Prise jack de casque | G Bouton DEL | |
| E Prise jack de microphone | | |

- | | | |
|------------|----------------|------------|
| A 電源開關 | D 前置耳機孔 | A 电源开关 |
| B 重置按鈕 | E 前置麥克風孔 | B 重置按鈕 |
| C USB Port | F USB 3,0 Port | C USB Port |
| D 前置耳機孔 | G LED按鈕 | D 前置耳机孔 |
| E 前置麥克風孔 | | E 前置麦克风孔 |

- | | | |
|------------|----------------|------------|
| A 电源开关 | C USB Port | A 电源开关 |
| B 重置按钮 | D 前置耳机孔 | B 重置按钮 |
| C USB Port | E 前置麦克风孔 | C USB Port |
| D 前置耳机孔 | F USB 3,0 Port | D 前置耳机孔 |
| E 前置麦克风孔 | G LED按钮 | E 前置麦克风孔 |



Official Website



火鳥官方網站



Support Ticket



Facebook



Instagram



Youtube



火鳥臉書粉絲專頁